

PMP FB Disp

Flowsheet Display of Comminution- and Classification Systems



PMP FB DISP

as a PMP software module supports the acquisition and presentation of experimental data and processing states in comminution- as well as classification systems.

FLWSHEET DISPLAY

The flowsheet display links all process units of a specific system and enables the graphical presentation of comminution and classification systems. The flowsheets are equipped with a flexibility so that many different flowsheet configurations and arrangements of the process units can be considered as well. The corresponding elements to obtain this flexibility are splitters and confluence points as system nodes.

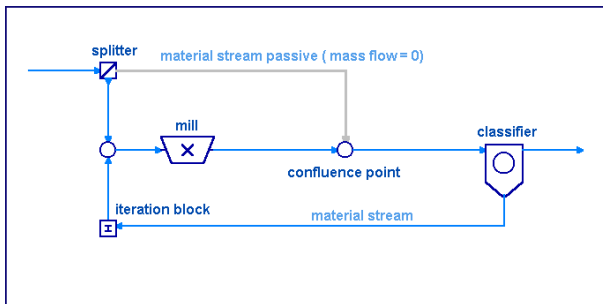


Fig 1: Display of a simple closed grinding circuit. The splitter setup is responsible for direct feeding the mill (as here realised) or for pre-classification of the plant feed.

All information of a process engineering system will be saved in detail in a flowsheet project file. PMP FB Disp creates the link between the PMP flowsheet project and the flowsheet sketch. These links are shown in a separate flowsheet view window.

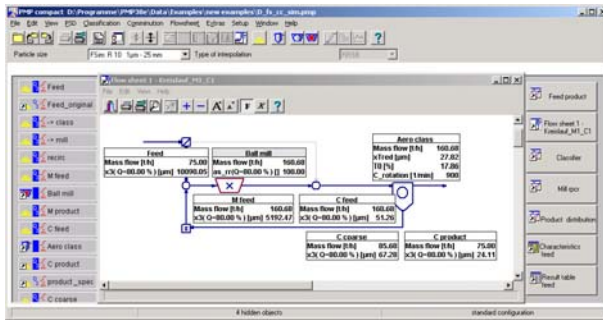


Fig 2: Project and flowsheet window of a closed grinding circuit

The flowsheet window can show both, process units with their linking streams and selected information for each element. For this purpose, the flowsheet window is equipped with display boxes, which can be activated for displaying selected information on the material streams and on the process units. The selection and the placement can be realized in the flowsheet window, in order to create an optimum view depending on the information density.

The characteristic values to be displayed in material flows and in the processing equipment can be selected according to the requirements of each specific problem.

DATA ACQUISITION

The efficient data acquisition from different sources is supported in all flowsheet projects:

- ♦ import of particle size distributions on a preferred particle size sequence
- ♦ on-line pick up of process variables
- ♦ acquisition and assignment of important characteristics

The flowsheet project serves as template ensuring a complete and uniform data acquisition and a corresponding data evaluation. All input values are requested and aligned according to the actual settings in the flowsheet project.

VISUALISATION SUPPORT

The flowsheet window possesses a high functionality, which allows a detailed presentation of information as well as an individually designed layout.

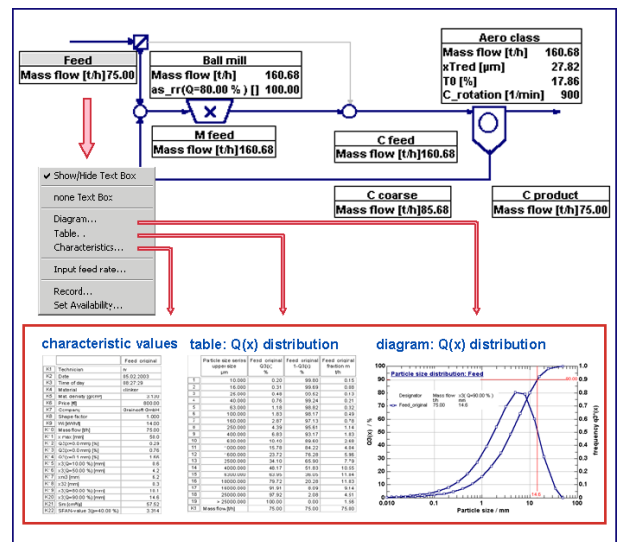


Fig. 3: Detailed view of the feed particle size distribution from the flowsheet

FLWSHEETS

In addition to an enclosed grinding circuit, PMP provides further usual flowsheets where the comminution equipment and the classifiers are linked together at several process stages:

- ♦ grinding circuit with three-stage post-classification
- ♦ grinding circuit with a three compartment mill, a classifier and dedusting equipment
- ♦ combination of two grinding circuits
- ♦ specific flowsheet of a grinding plant for the simultaneous processing of three material components
- ♦ two-stage classifier circuit with complete post-classification

Other flowsheets and more detailed information are documented in the flowsheet catalogue.